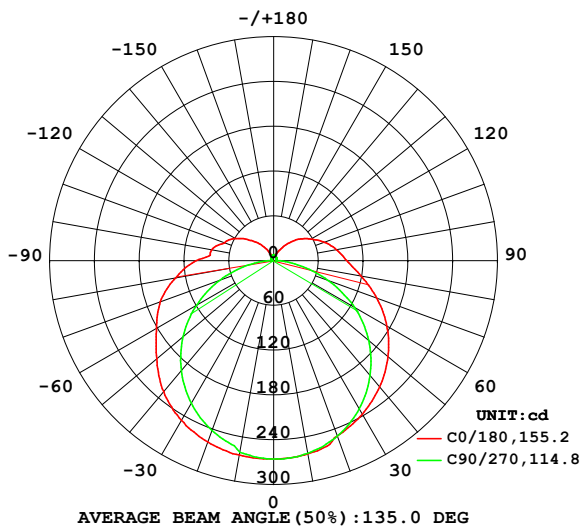


LUMINAIRE PHOTOMETRIC TEST REPORT

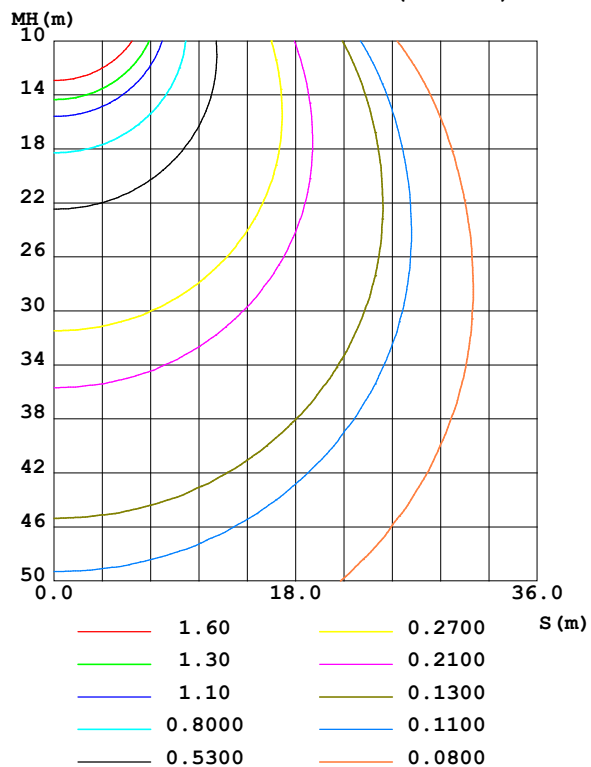
Test:U:101.40V I:0.1760A P:15.800W PF:0.8840 Freq:50.00Hz Lamp Flux:1146.6x1 lm		
NAME:	TYPE:	WEIGHT:
SPEC.:	DIM.:	SERIAL No.:
MFR.: Everfine	SUR.:	Shielding Angle:

DATA OF LAMP		PHOTOMETRIC DATA				Eff: 72.57 lm/W
MODEL	202412032	I _{max} (cd)	266.1	S/MH(C0/180)	1.34	
NOMINAL POWER(W)	15	LOR(%)	100.0	S/MH(C90/270)	1.28	
RATED VOLTAGE(V)	100	TOTAL FLUX(lm)	1146.6	η UP,DN(C0-180)	8.2,42.1	
NOMINAL FLUX(lm)	1146.6	CIE CLASS	SEMI-D.	η UP,DN(C180-360)	8.2,41.4	
LAMPS INSIDE	1	η up (%)	16.4	CIBSE SHR NOM	1.50	
TEST VOLTAGE(V)	100	η down (%)	83.6	CIBSE SHR MAX	1.50	

LUMINOUS INTENSITY DISTRIBUTION DIAGRAM



C0 PLANE ISOLUX DIAGRAM (UNIT:lx)



C Range: 0 - 360DEG
C Interval: 90.0DEG
Test Speed: HIGH
Temperature:25.3℃
Operators:DAMIN
Test Date:07 April 2025

γ Range: 0 - 180DEG
γ Interval: 1.0DEG
Test System:EVERFINE GO-2000B_V1 SYSTEM V2.00.459
Humidity:65.0%
Test Distance:8.186m [K=1.0000]
Remarks:

ZONAL FLUX DIAGRAM

ZONAL FLUX DIAGRAM:

γ	C0	C90	C180	C270					γ	Φ zone	Φ total	%lum, lamp
10	264.6	260.9	262.9	262.2					0- 10	25.22	25.22	2.2,2.2
20	258.6	242.1	250.0	249.6					10- 20	72.62	97.84	8.53,8.53
30	247.3	220.7	237.5	229.5					20- 30	112.0	209.9	18.3,18.3
40	229.3	192.5	220.8	201.0					30- 40	139.7	349.6	30.5,30.5
50	204.5	158.5	199.9	166.3					40- 50	152.4	502.0	43.8,43.8
60	181.6	119.2	175.1	125.6					50- 60	149.2	651.2	56.8,56.8
70	161.5	76.52	147.1	77.99					60- 70	132.2	783.5	68.3,68.3
80	133.6	34.07	118.9	32.50					70- 80	103.4	886.8	77.3,77.3
90	103.9	3.664	98.17	5.726					80- 90	71.47	958.3	83.6,83.6
100	84.28	3.260	85.71	3.663					90-100	51.59	1010	88.1,88.1
110	70.02	3.946	72.63	3.870					100-110	43.83	1054	91.9,91.9
120	59.73	4.730	58.03	4.327					110-120	34.85	1089	94.9,94.9
130	43.29	5.465	45.25	4.752					120-130	25.55	1114	97.2,97.2
140	29.63	6.192	30.29	5.129					130-140	16.59	1131	98.6,98.6
150	15.30	6.816	16.80	5.456					140-150	9.150	1140	99.4,99.4
160	7.581	7.313	8.624	5.784					150-160	4.172	1144	99.8,99.8
170	6.228	7.644	6.316	6.647					160-170	1.892	1146	99.9,99.9
180	6.416	7.503	6.395	8.278					170-180	0.6536	1147	100,100
DEG	LUMINOUS INTENSITY:cd									UNIT:lm		

Conical surface Flux(90deg): 425.25 lm

%lum = 37.1%

%lamp = 37.1%

Conical surface Flux(130deg): 720.28 lm

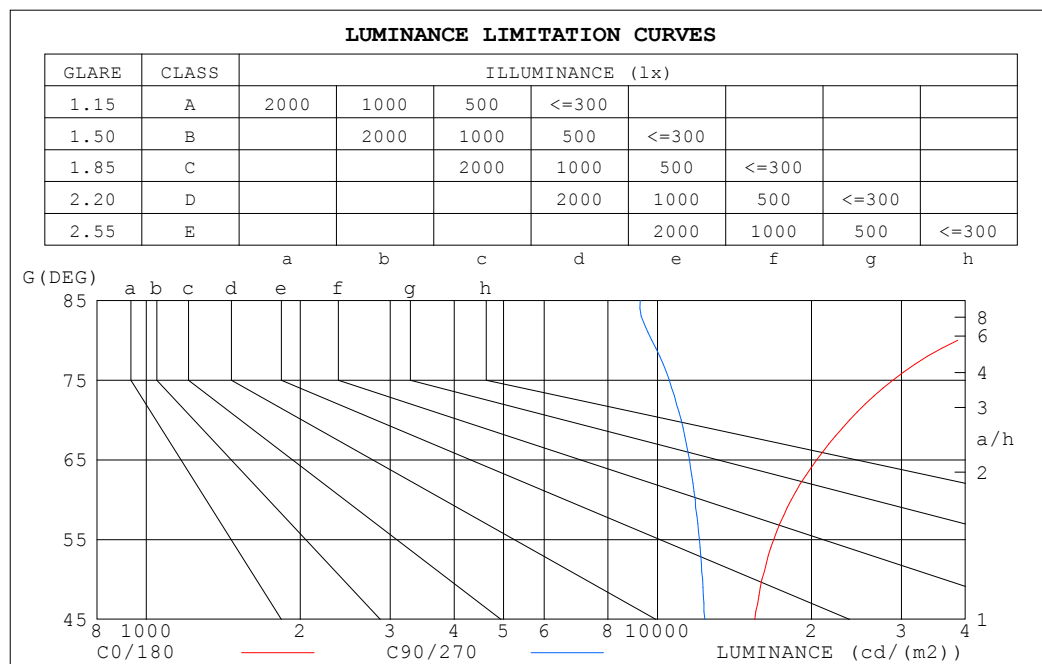
%lum = 62.8%

%lamp = 62.8%

C Range: 0 - 360DEG
 C Interval: 90.0DEG
 Test Speed: HIGH
 Temperature:25.3°C
 Operators:DAMIN
 Test Date:07 April 2025

γ Range: 0 - 180DEG
 γ Interval: 1.0DEG
 Test System:EVERFINE GO-2000B_V1 SYSTEM V2.00.459
 Humidity:65.0%
 Test Distance:8.186m [K=1.0000]
 Remarks:

LUMINANCE LIMITATION CURVES



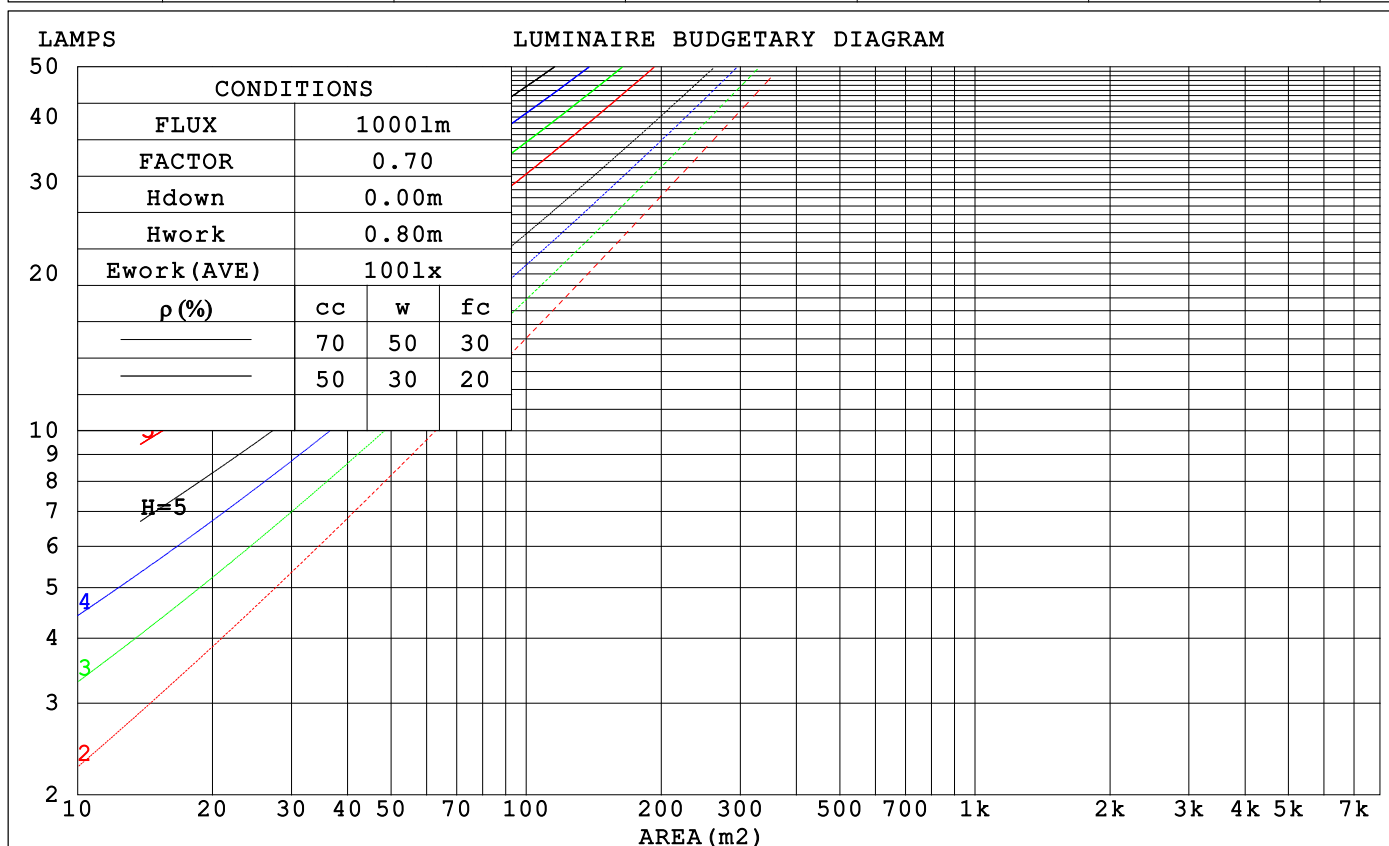
LUMINANCE cd/(m2)		
G (DEG)	C0/180	C90/270
85	69094	9246
80	38694	9748
75	28857	10540
70	23763	11116
65	20479	11549
60	18275	11848
55	16866	12070
50	16007	12254
45	15491	12375

C Range: 0 - 360DEG
C Interval: 90.0DEG
Test Speed: HIGH
Temperature:25.3°C
Operators:DAMIN
Test Date:07 April 2025

γ Range: 0 - 180DEG
γ Interval: 1.0DEG
Test System:EVERFINE GO-2000B_V1 SYSTEM V2.00.459
Humidity:65.0%
Test Distance:8.186m [K=1.0000]
Remarks:

CU AND LUMINAIRE BUDGETARY ESTIMATE DIAGRAM

pcc	80%			70%			50%			30%			10%			0
pw	50%	30%	10%	50%	30%	10%	50%	30%	10%	50%	30%	10%	50%	30%	10%	0
pfc	20%			20%			20%			20%			20%			0
RCR	RCR:Room Cavity Ratio			Coefficients of Utilization(CU)												
0.0	1.15	1.15	1.15	1.11	1.11	1.11	1.02	1.02	1.02	.94	.94	.94	.87	.87	.87	.84
1.0	.97	.92	.87	.93	.88	.84	.86	.82	.78	.79	.76	.73	.73	.70	.68	.65
2.0	.83	.75	.69	.80	.73	.67	.73	.68	.63	.68	.63	.59	.62	.58	.55	.52
3.0	.72	.63	.56	.69	.61	.55	.64	.57	.52	.59	.53	.49	.54	.50	.46	.43
4.0	.63	.54	.47	.61	.52	.46	.56	.49	.43	.52	.46	.41	.48	.43	.39	.36
5.0	.56	.47	.40	.54	.45	.39	.50	.43	.37	.46	.40	.35	.43	.38	.33	.31
6.0	.50	.41	.34	.49	.40	.34	.45	.38	.32	.42	.35	.30	.39	.33	.29	.26
7.0	.45	.36	.30	.44	.35	.29	.41	.33	.28	.38	.32	.27	.35	.30	.25	.23
8.0	.41	.33	.27	.40	.32	.26	.37	.30	.25	.35	.28	.24	.32	.27	.23	.21
9.0	.38	.29	.24	.37	.29	.23	.34	.27	.22	.32	.26	.21	.30	.24	.20	.18
10.0	.35	.27	.21	.34	.26	.21	.32	.25	.20	.30	.24	.19	.28	.22	.18	.17



C Range: 0 - 360DEG
C Interval: 90.0DEG
Test Speed: HIGH
Temperature:25.3℃
Operators:DAMIN
Test Date:07 April 2025

γ Range: 0 - 180DEG
γ Interval: 1.0DEG
Test System:EVERFINE GO-2000B_V1 SYSTEM V2.00.459
Humidity:65.0%
Test Distance:8.186m [K=1.0000]
Remarks:

WEC AND CCEC

ρ_{cc}	80%			70%			50%			30%			10%			0	
ρ_w	50%	30%	10%	50%	30%	10%	50%	30%	10%	50%	30%	10%	50%	30%	10%	0	
ρ_{fc}	20%			20%			20%			20%			20%			0	
RCR	RCR:Room Cavity Ratio						Wall Exitance Coefficients (WEC)										
0.0																	
1.0	.370	.210	.067	.358	.204	.065	.335	.192	.061	.314	.181	.058	.294	.171	.055		
2.0	.325	.178	.055	.314	.173	.053	.293	.163	.051	.274	.154	.048	.257	.145	.046		
3.0	.291	.155	.046	.281	.151	.045	.262	.142	.043	.245	.134	.041	.229	.127	.039		
4.0	.263	.137	.040	.254	.133	.039	.237	.126	.038	.222	.119	.036	.207	.112	.034		
5.0	.240	.122	.035	.232	.119	.035	.216	.113	.033	.202	.107	.032	.189	.101	.030		
6.0	.220	.110	.032	.213	.108	.031	.199	.102	.030	.186	.097	.028	.174	.091	.027		
7.0	.203	.101	.029	.197	.098	.028	.184	.093	.027	.172	.088	.026	.161	.084	.025		
8.0	.189	.092	.026	.183	.090	.025	.171	.085	.024	.160	.081	.023	.150	.077	.022		
9.0	.176	.085	.024	.171	.083	.023	.160	.079	.022	.150	.075	.021	.140	.071	.021		
10.0	.165	.079	.022	.160	.077	.022	.150	.073	.021	.141	.070	.020	.132	.066	.019		

ρ_{cc}	80%			70%			50%			30%			10%			0
ρ_w	50%	30%	10%	50%	30%	10%	50%	30%	10%	50%	30%	10%	50%	30%	10%	0
ρ_{fc}	20%			20%			20%			20%			20%			0
RCR	RCR:Room Cavity Ratio						Ceiling Cavity Exitance Coefficients (CCEC)									
0.0	.316	.316	.316	.270	.270	.270	.184	.184	.184	.106	.106	.106	.034	.034	.034	
1.0	.311	.282	.256	.266	.242	.220	.182	.166	.152	.105	.096	.089	.034	.031	.029	
2.0	.304	.259	.221	.260	.223	.191	.178	.154	.133	.103	.090	.078	.033	.029	.025	
3.0	.296	.242	.199	.254	.209	.173	.174	.145	.121	.101	.085	.071	.032	.028	.023	
4.0	.289	.230	.184	.248	.198	.160	.170	.138	.113	.098	.081	.067	.032	.026	.022	
5.0	.281	.220	.174	.241	.190	.152	.166	.133	.107	.096	.078	.064	.031	.025	.021	
6.0	.274	.212	.167	.235	.183	.146	.162	.128	.103	.094	.075	.061	.030	.025	.020	
7.0	.267	.205	.162	.229	.178	.141	.158	.125	.100	.092	.073	.060	.030	.024	.020	
8.0	.260	.199	.158	.224	.173	.138	.155	.121	.098	.090	.072	.058	.029	.023	.019	
9.0	.254	.195	.155	.219	.169	.135	.151	.119	.096	.088	.070	.057	.029	.023	.019	
10.0	.248	.191	.152	.214	.165	.133	.148	.116	.094	.086	.069	.056	.028	.023	.019	

C Range: 0 - 360DEG
 C Interval: 90.0DEG
 Test Speed: HIGH
 Temperature: 25.3°C
 Operators: DAMIN
 Test Date: 07 April 2025

γ Range: 0 - 180DEG
 γ Interval: 1.0DEG
 Test System: EVERFINE GO-2000B_V1 SYSTEM V2.00.459
 Humidity: 65.0%
 Test Distance: 8.186m [K=1.0000]
 Remarks:

UGR(Unified Glare Rating) Table

ceiling/cavity		0.7	0.7	0.5	0.5	0.3	0.7	0.7	0.5	0.5	0.3
walls		0.5	0.3	0.5	0.3	0.3	0.5	0.3	0.5	0.3	0.3
working plane		0.2	0.2	0.2	0.2	0.2	0.2	0.2	0.2	0.2	0.2
Room dimensions		Viewed crosswise					Viewed endwise				
x = 2H y = 2H	2H	22.0	23.4	22.5	23.8	24.4	20.4	21.8	20.9	22.3	22.8
	3H	24.6	25.9	25.2	26.4	27.0	22.1	23.3	22.6	23.8	24.4
	4H	26.1	27.3	26.6	27.8	28.4	22.7	24.0	23.3	24.5	25.1
	6H	27.7	28.8	28.2	29.4	30.0	23.3	24.4	23.8	24.9	25.6
	8H	28.5	29.6	29.1	30.2	30.8	23.4	24.5	24.0	25.1	25.7
	12H	29.5	30.6	30.1	31.2	31.8	23.5	24.6	24.1	25.2	25.8
4H	2H	22.5	23.7	23.1	24.3	24.9	21.4	22.6	21.9	23.1	23.7
	3H	25.4	26.4	26.0	27.0	27.7	23.3	24.4	23.9	24.9	25.6
	4H	27.0	28.0	27.6	28.6	29.2	24.2	25.1	24.8	25.7	26.4
	6H	28.8	29.6	29.4	30.3	31.0	24.9	25.7	25.5	26.4	27.1
	8H	29.8	30.6	30.4	31.2	31.9	25.1	25.9	25.8	26.6	27.3
	12H	30.9	31.7	31.6	32.3	33.1	25.3	26.1	26.0	26.7	27.5
8H	4H	27.3	28.1	27.9	28.7	29.5	25.0	25.8	25.6	26.4	27.1
	6H	29.3	30.0	30.0	30.7	31.4	26.0	26.7	26.7	27.3	28.1
	8H	30.5	31.1	31.2	31.8	32.6	26.4	27.0	27.1	27.7	28.5
	12H	31.9	32.4	32.6	33.1	33.9	26.8	27.3	27.5	28.0	28.9
12H	4H	27.3	28.1	28.0	28.7	29.5	25.2	26.0	25.9	26.6	27.4
	6H	29.4	30.0	30.1	30.7	31.5	26.4	27.0	27.1	27.7	28.5
	8H	30.7	31.2	31.4	31.9	32.7	27.0	27.5	27.7	28.2	29.0
Variations with the observer position at spacings(CIE Pub.117):											
S = 1.0H		+ 0.1 / - 0.1					+ 0.1 / - 0.2				
1.5H		+ 0.2 / - 0.2					+ 0.2 / - 0.3				
2.0H		+ 0.2 / - 0.3					+ 0.2 / - 0.5				

CIE Pub.117, 1147 lm Total Lamp Luminous Flux Corrected (8log(F/F0) = 0.5)
Area: 0.02 m2

C Range: 0 - 360DEG
C Interval: 90.0DEG
Test Speed: HIGH
Temperature:25.3℃
Operators:DAMIN
Test Date:07 April 2025

γ Range: 0 - 180DEG
γ Interval: 1.0DEG
Test System:EVERFINE GO-2000B_V1 SYSTEM V2.00.459
Humidity:65.0%
Test Distance:8.186m [K=1.0000]
Remarks:

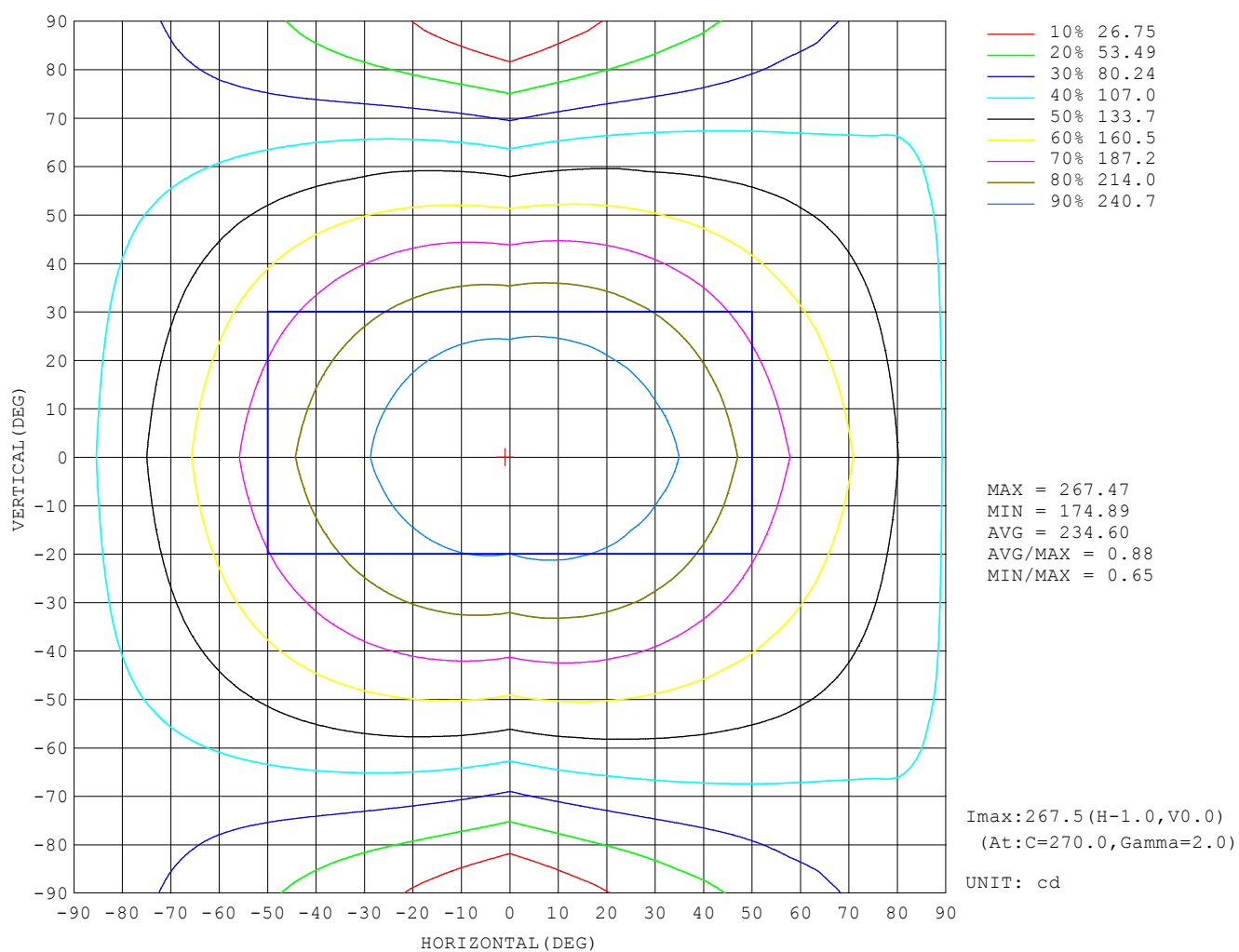
UTILIZATION FACTORS TABLE

REFLECTANCE										
Ceiling	0.8	0.8	0.8	0.7	0.7	0.7	0.5	0.5	0.5	0
Walls	0.7	0.5	0.3	0.7	0.5	0.3	0.7	0.5	0.3	0
Working plane	0.2	0.2	0.2	0.2	0.2	0.2	0.2	0.2	0.2	0
ROOM INDEX	UTILIZATION FACTORS (PERCENT) $k(RI) \times RCR = 5$									
$k = 0.60$	49	37	29	48	36	29	46	35	29	22
0.80	58	45	37	57	45	37	54	43	36	28
1.00	66	53	45	64	52	45	61	53	43	35
1.25	73	61	52	71	59	52	67	57	50	40
1.50	78	66	58	76	65	57	71	62	55	45
2.00	85	75	67	82	73	65	77	69	63	51
2.50	90	80	72	87	78	71	80	73	67	55
3.00	94	85	78	90	82	76	84	77	72	59
4.00	98	91	84	94	88	82	87	82	77	63
5.00	101	95	89	97	91	86	90	85	81	66
ROOM INDEX	UF (total)									Direct
According to DIN EN 13032-2 2004			Suspended					SHRNOM = 1.25		

C Range: 0 - 360DEG
C Interval: 90.0DEG
Test Speed: HIGH
Temperature: 25.3°C
Operators: DAMIN
Test Date: 07 April 2025

γ Range: 0 - 180DEG
 γ Interval: 1.0DEG
Test System: EVERFINE GO-2000B_V1 SYSTEM V2.00.459
Humidity: 65.0%
Test Distance: 8.186m [K=1.0000]
Remarks:

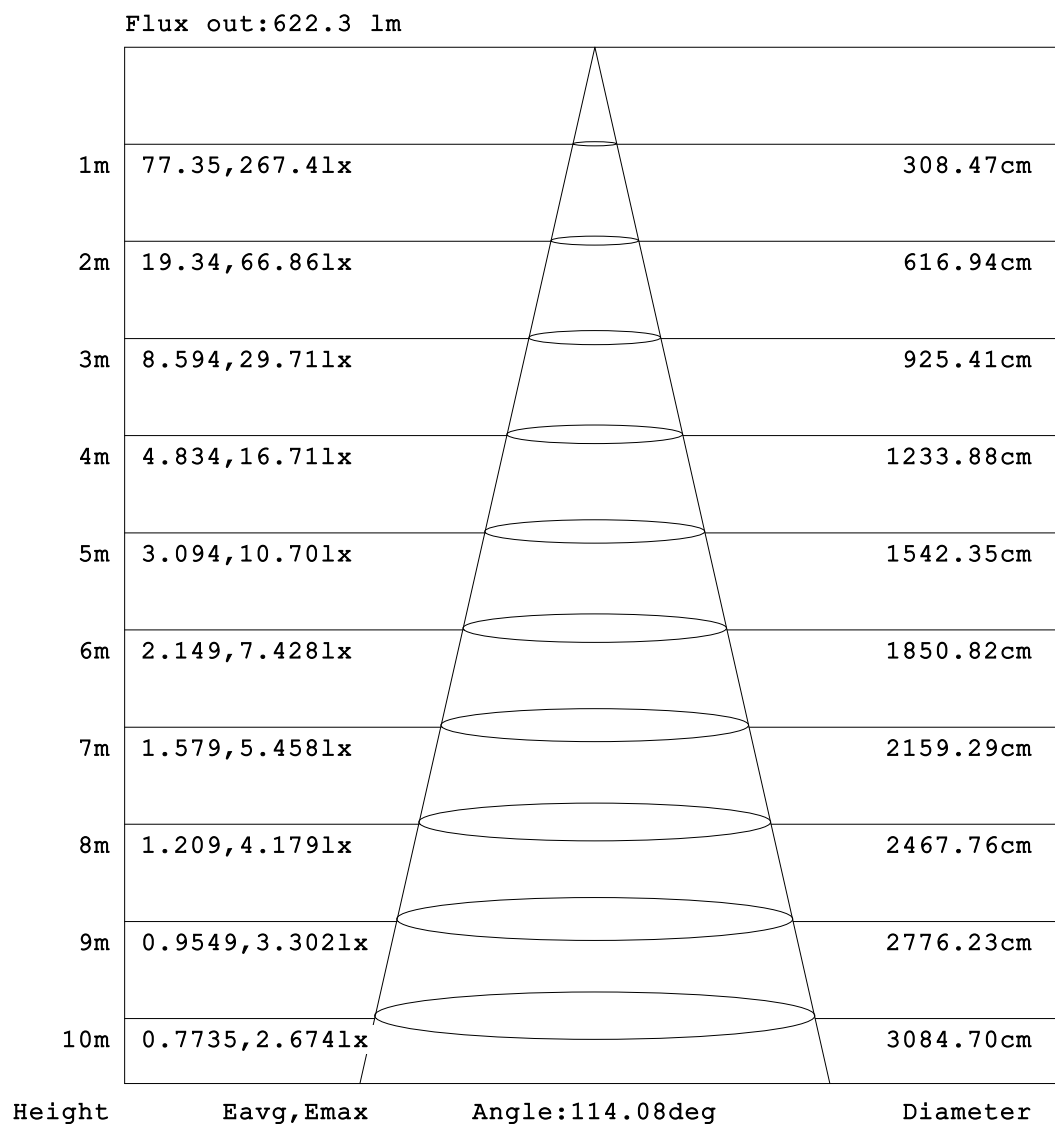
ISOCANDELA DIAGRAM



C Range: 0 - 360DEG
C Interval: 90.0DEG
Test Speed: HIGH
Temperature: 25.3°C
Operators: DAMIN
Test Date: 07 April 2025

γ Range: 0 - 180DEG
γ Interval: 1.0DEG
Test System: EVERFINE GO-2000B_V1 SYSTEM V2.00.459
Humidity: 65.0%
Test Distance: 8.186m [K=1.0000]
Remarks:

AAI Figure

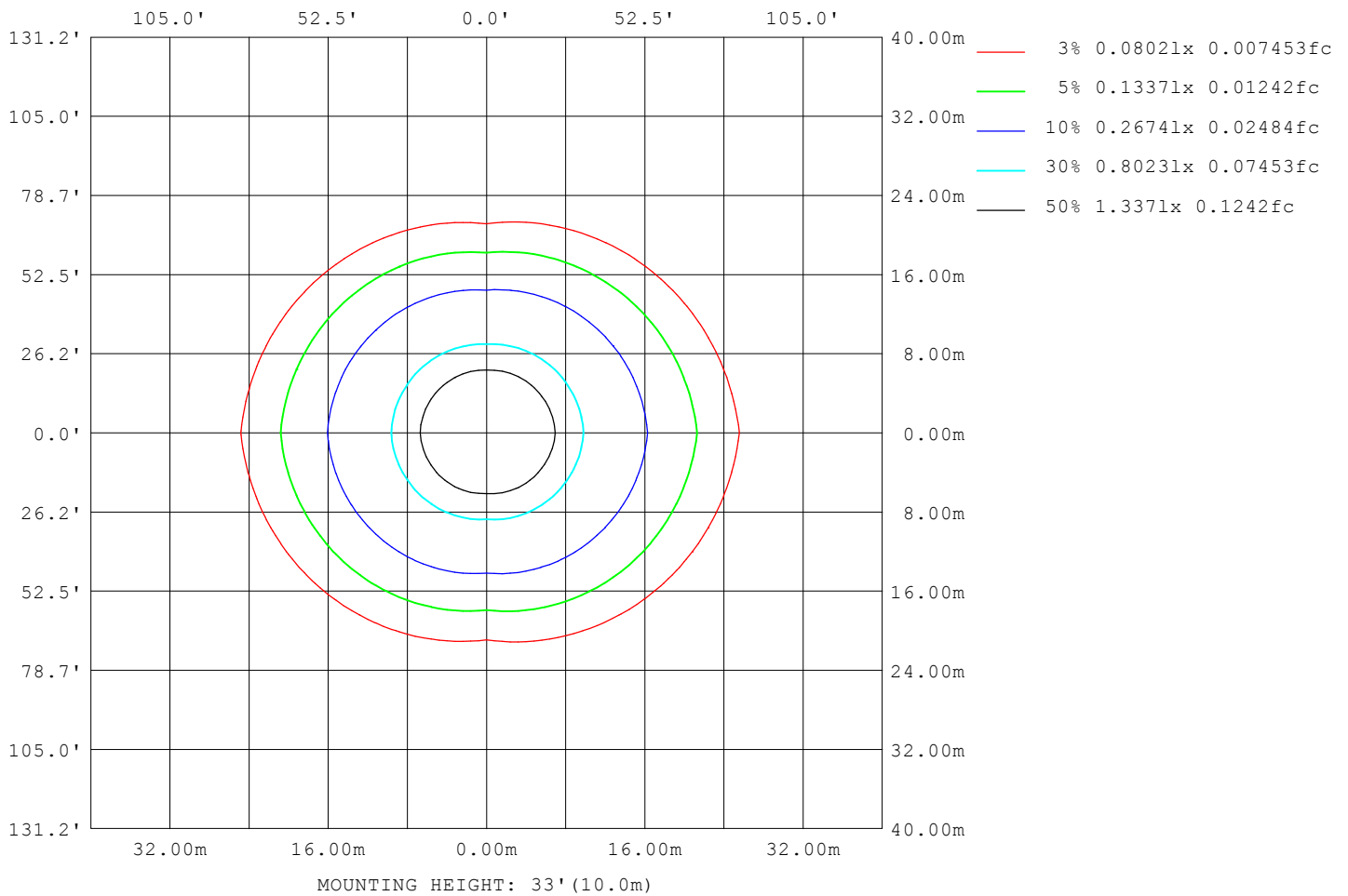


Note: The Curves indicate the illuminated area and the average illumination when the luminaire is at different distance.

C Range: 0 - 360DEG
 C Interval: 90.0DEG
 Test Speed: HIGH
 Temperature: 25.3°C
 Operators: DAMIN
 Test Date: 07 April 2025

γ Range: 0 - 180DEG
 γ Interval: 1.0DEG
 Test System: EVERFINE GO-2000B_V1 SYSTEM V2.00.459
 Humidity: 65.0%
 Test Distance: 8.186m [K=1.0000]
 Remarks:

ISOLUX DIAGRAM



C Range: 0 - 360DEG
 C Interval: 90.0DEG
 Test Speed: HIGH
 Temperature: 25.3°C
 Operators: DAMIN
 Test Date: 07 April 2025

γ Range: 0 - 180DEG
 γ Interval: 1.0DEG
 Test System: EVERFINE GO-2000B_V1 SYSTEM V2.00.459
 Humidity: 65.0%
 Test Distance: 8.186m [K=1.0000]
 Remarks:

LED Avg.L Report

Test:U:101.40V I:0.1760A P:15.800W PF:0.8840 Freq:50.00Hz Lamp Flux:1146.6x1 lm		
NAME:	TYPE:	WEIGHT:
SPEC.:	DIM.:	SERIAL No.:
MFR.: Everfine	SUR.:	Shielding Angle:

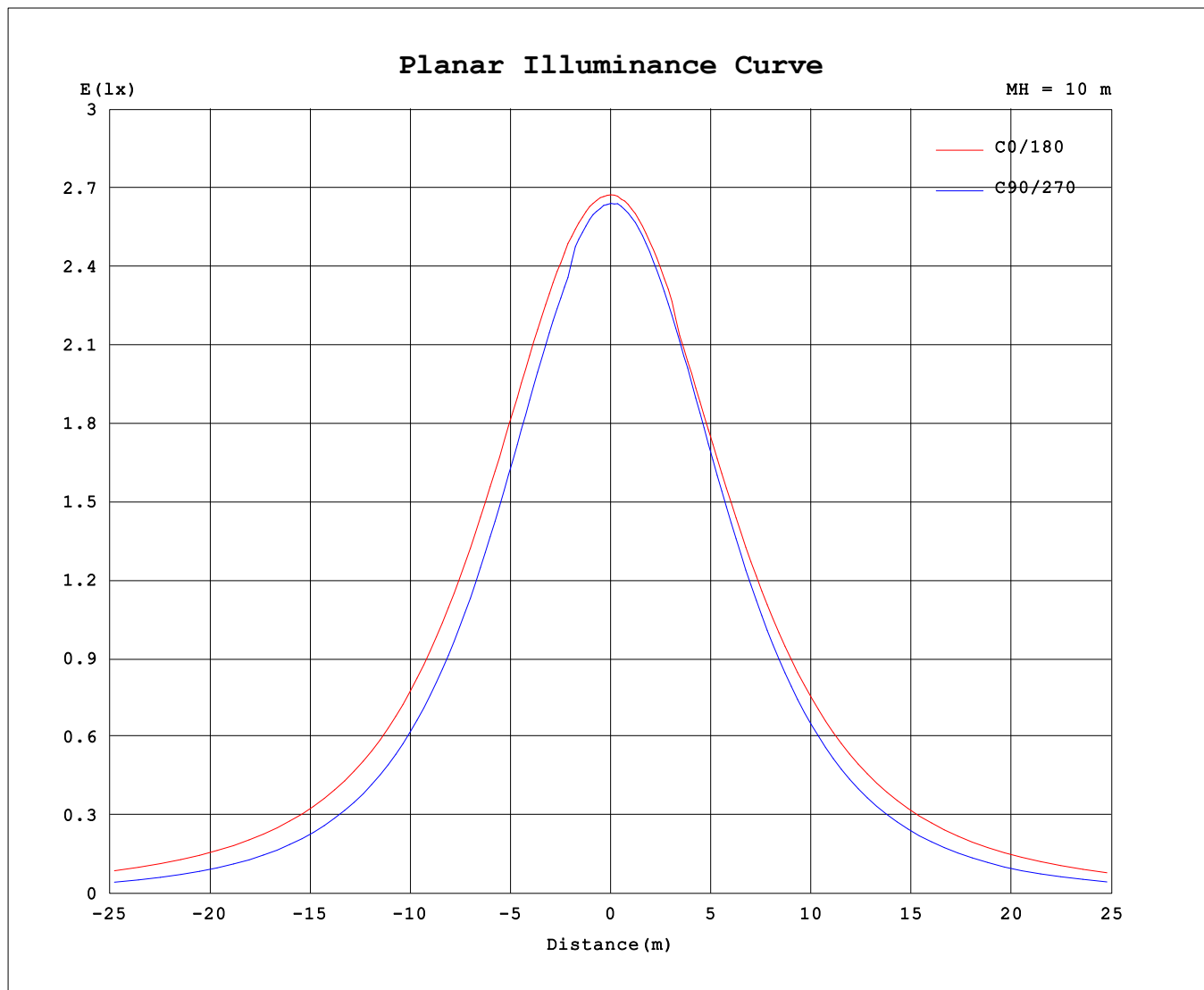
AvgL	cd/m2
L_0~180 (65) av	19731
L_0~180 (75) av	27166
L_0~180 (85) av	65043
L_90~270 (65) av	11817
L_90~270 (75) av	10508
L_90~270 (85) av	9328
L_45 (65) av	14768
L_45 (75) av	16707
L_45 (85) av	30148

Standard: GB/T 29293-2012

C Range: 0 - 360DEG
C Interval: 90.0DEG
Test Speed: HIGH
Temperature:25.3℃
Operators:DAMIN
Test Date:07 April 2025

γ Range: 0 - 180DEG
γ Interval: 1.0DEG
Test System:EVERFINE GO-2000B_V1 SYSTEM V2.00.459
Humidity:65.0%
Test Distance:8.186m [K=1.0000]
Remarks:

Planar Illuminance Curve



C Range: 0 - 360DEG
C Interval: 90.0DEG
Test Speed: HIGH
Temperature: 25.3°C
Operators: DAMIN
Test Date: 07 April 2025

γ Range: 0 - 180DEG
 γ Interval: 1.0DEG
Test System: EVERFINE GO-2000B_V1 SYSTEM V2.00.459
Humidity: 65.0%
Test Distance: 8.186m [K=1.0000]
Remarks:

LUMINOUS DISTRIBUTION INTENSITY DATA

Table--1

UNIT: cd

C (DEG) γ (DEG)	0	90	180	270															
0	266	266	266	266															
5	266	265	265	265															
10	265	261	263	262															
15	263	250	260	257															
20	259	242	250	250															
25	253	232	244	241															
30	247	221	238	229															
35	239	207	230	216															
40	229	193	221	201															
45	218	176	211	184															
50	205	159	200	166															
55	192	139	188	147															
60	182	119	175	126															
65	172	98.2	162	102															
70	162	76.5	147	78.0															
75	148	54.9	133	53.9															
80	134	34.1	119	32.5															
85	120	16.2	107	16.3															
90	104	3.66	98.2	5.73															
95	85.6	2.82	91.7	3.68															
100	84.3	3.26	85.7	3.66															
105	78.6	3.58	79.4	3.74															
110	70.0	3.95	72.6	3.87															
115	66.2	4.33	65.3	4.11															
120	59.7	4.73	58.0	4.33															
125	52.1	5.12	51.8	4.54															
130	43.3	5.47	45.2	4.75															
135	36.1	5.83	37.9	4.92															
140	29.6	6.19	30.3	5.13															
145	22.4	6.52	23.1	5.25															
150	15.3	6.82	16.8	5.46															
155	10.3	7.08	11.9	5.61															
160	7.58	7.31	8.62	5.78															
165	6.10	7.50	6.42	5.99															
170	6.23	7.64	6.32	6.65															
175	6.32	7.69	6.29	7.38															
180	6.42	7.50	6.39	8.28															

C Range: 0 - 360DEG
C Interval: 90.0DEG
Test Speed: HIGH
Temperature:25.3℃
Operators:DAMIN
Test Date:07 April 2025

γ Range: 0 - 180DEG
γ Interval: 1.0DEG
Test System:EVERFINE GO-2000B_V1 SYSTEM V2.00.459
Humidity:65.0%
Test Distance:8.186m [K=1.0000]
Remarks: